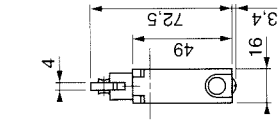
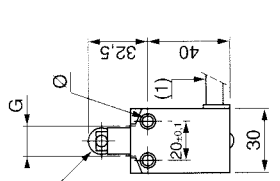


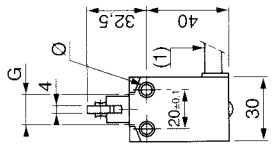
Complete switches for "severe duty", compact
XCW-A102



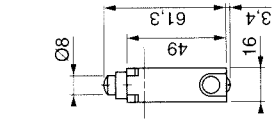
XCW-A102



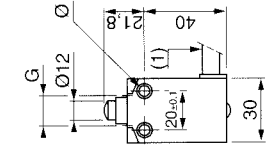
XCW-A102



XCW-A102

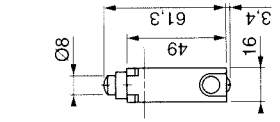


XCW-A102

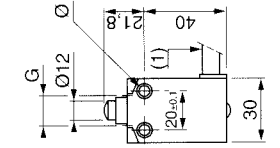


XCW-A102

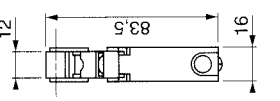
XCW-A110



XCW-A110

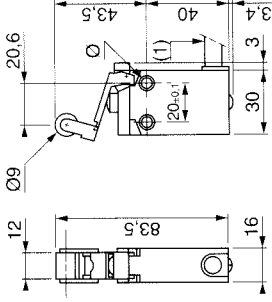


XCW-A110

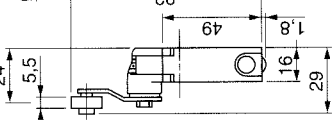


XCW-A110

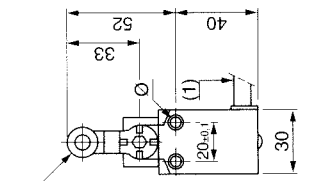
XCW-A110 + XCW-Z24



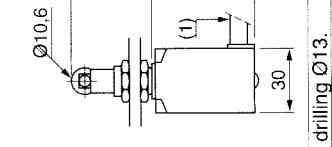
XCW-F110



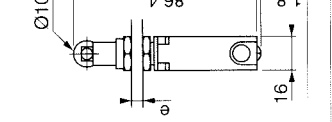
XCW-A115



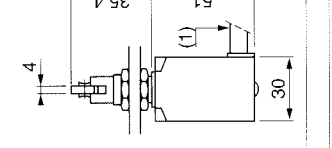
XCW-A115



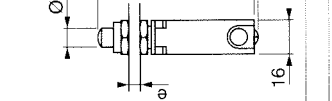
XCW-A115



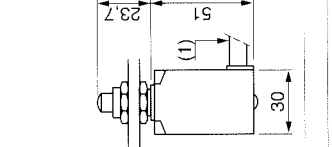
XCW-A115



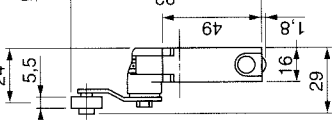
XCW-A115



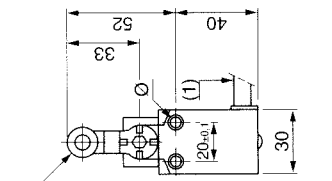
XCW-A115



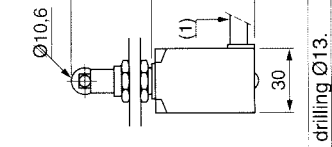
XCW-F110



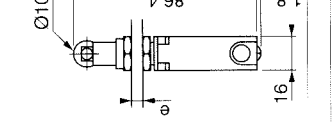
XCW-A115



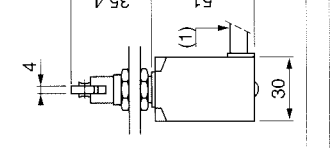
XCW-A115



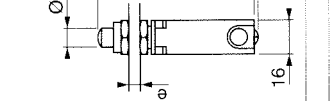
XCW-A115



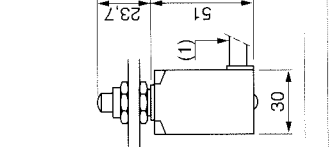
XCW-A115



XCW-A115



XCW-A115



XCW-F110

e : 8 mm max., drilling Ø13.

(1) : pre-wired cable, Ø7 mm, lenght 1 m.

Ø : 2 holes Ø4,3 counterbored Ø8,2 mm x 4 mm deep.

G : fixing by the upper part of the body : 2 tapped holes, M3 on 18 mm centres. Ø13 mm panel cut-out for passage of the operating head, panel thickness : 5 mm max.