

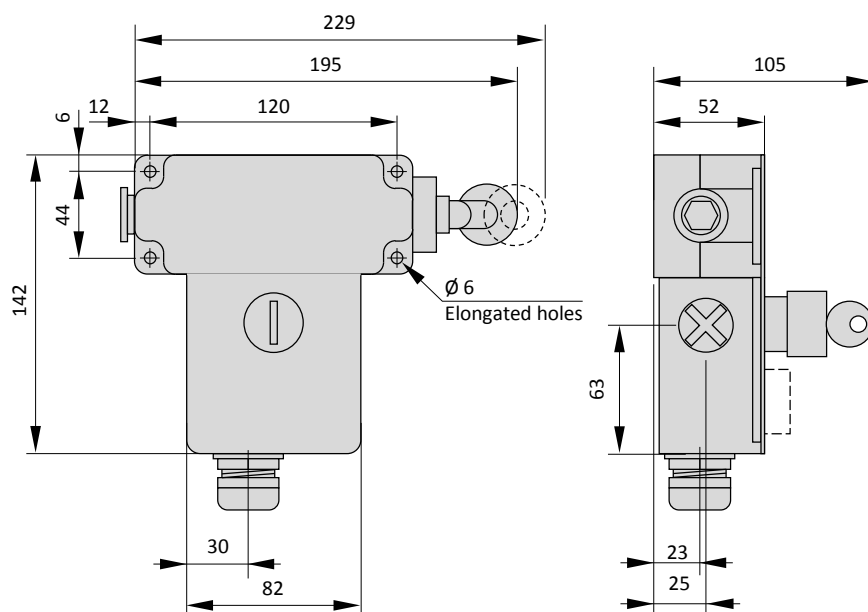
The pull-wire switches are installed above or near conveyors, machines or installations which can not be secured by other devices such as protective covers.

They provide a reliable and proven solution for all situations where security is fundamental especially in potentially explosive atmospheres.

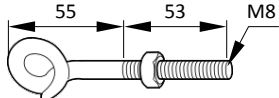
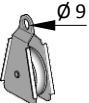


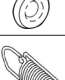

They are designed for explosive atmospheres gas/vapours or dust and meet the highest levels of protection.

TECHNICAL DATA

Material	Zamac, carbon steel
IP rating	IP65 according to EN/IEC 60529
Temperature range	- 20°C ... + 60°C
Certificate	INERIS 04ATEX0040
Marking	II 2 GD Ex d e IIC T6 Gb or Ex tb IIIC T85°C Db
Features of the contact block	U _{max} = 250 V I _{max} = 3 A
Cable entry	M20 cable gland
Mechanical endurance of the head	Head: 5 million operations - Contact block: 1 million operations



Product code	Control unit type	Operating anchoring cable point	Contact
XY2WCE2A250	Reset by booted push button	To left	1 x NC + NO
XY2WCE2A270	Reset by booted push button	To left	2 x NC + NC
XY2WCE1A250	Reset by booted push button	To right	1 x NC + NO
XY2WCE1A270	Reset by booted push button	To right	2 x NC + NC
XY2WCE2A450	Reset by key release push button - Key 421	To left	1 x NC + NO
XY2WCE2A470	Reset by key release push button - Key 421	To left	2 x NC + NC
XY2WCE1A450	Reset by key release push button - Key 421	To right	1 x NC + NO
XY2WCE1A470	Reset by key release push button - Key 421	To right	2 x NC + NC

Accessories	Product code	Description
	XY2WCZ705	Cable pulley support
	XY2WCZ708	Pulley for Ø 5 mm cable max.
	XY2WCZ701	Cable end protector for cable Ø 3,2 mm
	XY2WCZ704	Cable end protector for cable Ø 5 mm
	XY2WCZ602	Swivelling cable support
	XY2WCZ702	End spring